

Clover Hill Wildlife Management Area

General Description

Clover Hill Wildlife Management Area (WMA) is located in the east central Vermont town of Strafford. The WMA is 506 acres in size and is mostly forested with red and sugar maple, yellow birch, beech, hemlock and red spruce. Access to the WMA is from Route 132 and Carpenter Hill Road, or via Brook Road out of Strafford Village and Cross/Carpenter Hill Roads. It is owned by the State of Vermont; however, timber and mineral rights are privately owned. Management activities by the Vermont Fish & Wildlife Department are therefore restricted to those that are compatible with the timber management.

History

This part of Orange County was once a nationally important region for copper production. The WMA was purchased in 1961 using Vermont Fish & Wildlife Department funds generated from the sale of hunting and fishing licenses.



Deer need protected areas, usually coniferous woodlands, to survive Vermont's harsh winters.

©New England Nature photo.

Habitat Features

Clover Hill WMA lies within the watershed of the West Branch of the Ompompanoosuc River. It is comprised of northern hardwood forest, with sugar maple, yellow birch and beech dominating the overstory. There is a deer wintering area in the conifers in the north central portion of the WMA, south of Carpenter Hill Road along the small stream. There are small areas of old field along Carpenter Hill Road in the northeast corner of the WMA, as well as one in the southeast extremity.



©Charles Willey photo.

Common Fish and Wildlife

Mammals Game animals include white-tailed deer, black bear, moose, snowshoe hare, fisher, raccoon and coyote. Expect to find many smaller non-game species as well.

Birds Expect to find ruffed grouse, turkey and deciduous forest/coniferous forest-associated songbirds.

Reptiles and Amphibians Salamanders such as Jefferson's and associated hybrids, spotted, dusky, northern two-lined and red-backed may be found on the WMA. American toad, green and wood frogs are known to occur. Red-bellied and garter snakes may also be found.

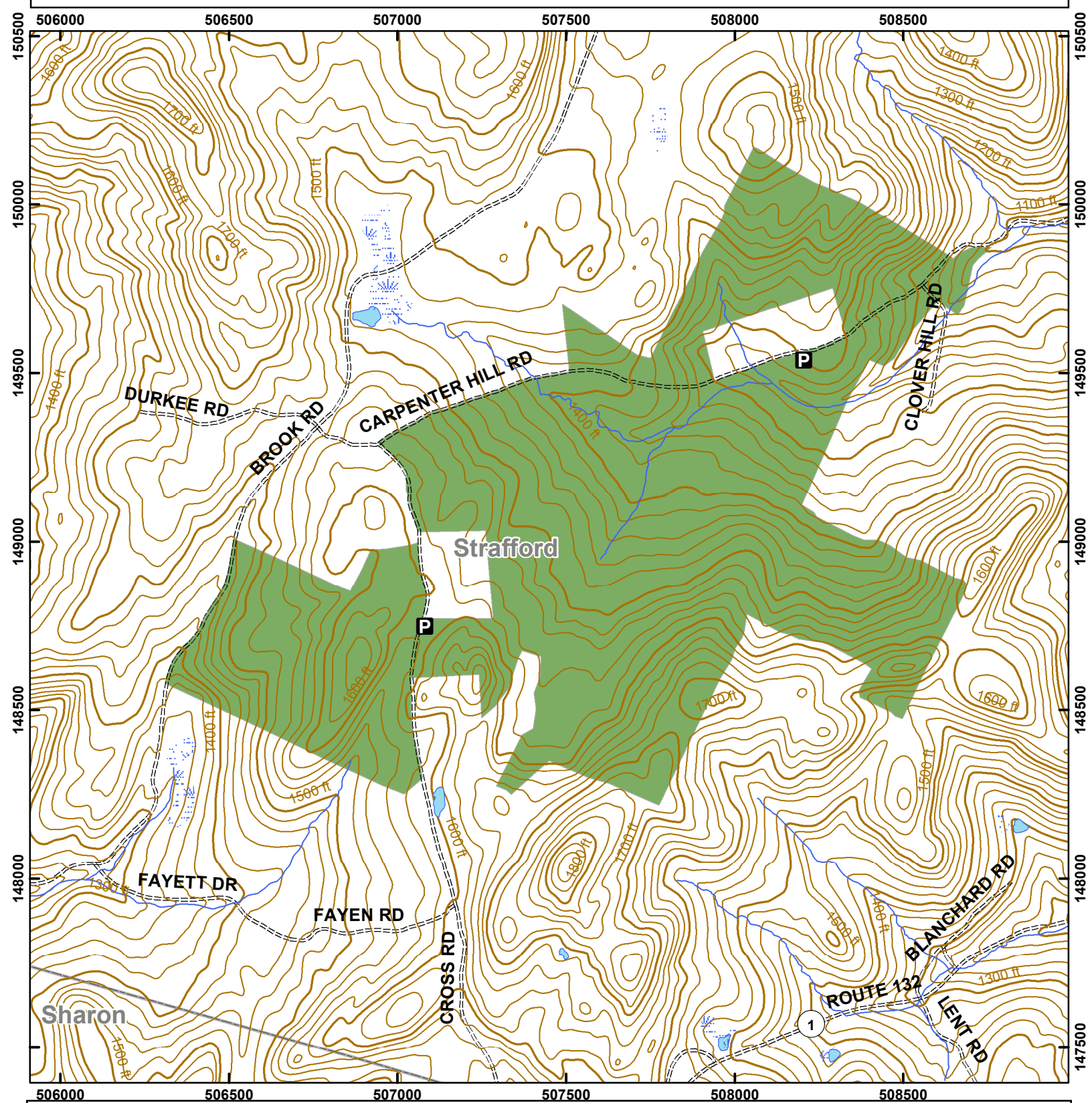
Fish There are no fishable waters on this WMA.

Clover Hill WMA is open to regulated hunting, trapping, hiking and wildlife viewing.

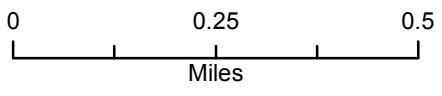


Vermont Fish & Wildlife Department

Clover Hill Wildlife Management Area



Clover Hill WMA: 506 acres



- Wildlife Management Area
- Other Public Land
- Private w/Public Access
- Boat Ramp
- Gate
- Wildlife Viewing Areas
- Car-top Access
- Parking
- Designated Camp Site During Big Game Seasons Only

This map is for illustrative purposes only. The accuracy of the data layers shown on this map are limited by the accuracy of the source materials. No warranty as to the accuracy or the usefulness of the data is expressed or implied.