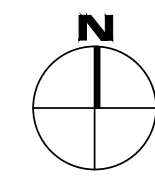


TOWN HALL RENOVATIONS STRAFFORD, VERMONT



ORTHO MAP (2024)-STRAFFORD, VT

DRAWING LIST

C001	COVERSHEET
C002	LEGEND AND NOTES
C101	EXISTING CONDITIONS
C202	PROPOSED CONDITIONS
C301	SITE DETAILS

No.	Description	Date	Stamp
1	COORDINATION UPDATE	5/29/2025	

ENGINEERING VENTURES PC
 208 Flynn Avenue, Suite 2A, Burlington, VT 05401 • 802-863-6225
 85 Mechanic Street, Suite E2-3, Lebanon, NH 03766 • 603-442-3333
 414 Union Street, Schenectady, NY 12305 • 518-205-9141
 www.engineeringventures.com

TONI PIPPY
 TOWN OF STRAFFORD
 227 JUSTIN MORRILL MEMORIAL HWY
 STRAFFORD, VERMONT
 PHONE NUMBER

COVER PAGE AND OVERVIEW
 STRAFFORD TOWN OFFICE
 RENOVATIONS
 STRAFFORD, ORANGE COUNTY, VERMONT

EV Project #	24537
Drawn By:	LRL
Checked By:	PB
Scale:	1" = 5'
Date:	08/12/2025

C001

STANDARD ABBREVIATIONS

BENCHMARK	BM	END OF VERTICAL CURVE ELEVATION	EVCE	LIMITS OF CONSTRUCTION	LOC	REINFORCED CONCRETE PIPE	RCP
BEGINNING OF VERTICAL CURVE ELEVATION	BVCE	END OF VERTICAL CURVE STATION	EVCS	LIMITS OF DISTURBANCE	LOD	RIGHT-OF-WAY	ROW
BEGINNING OF VERTICAL CURVE STATION	BVCS	EXISTING	EX	MAXIMUM	MAX	SANITARY	SAN
CAST-IN-PLACE	CIP	EXISTING GRADE/GROUND	EG	MINIMUM	MIN	SANITARY MANHOLE	SMH
CAST IRON	CI	FINISHED FLOOR	FF	MANUAL ON UNIFORM TRAFFIC CONTROL DEVICES	MUTCD	SEPTIC TANK	ST
CATCH BASIN	CB	FINISHED GRADE/GROUND	FG	MONITORING WELL	MW	SILT FENCE	SF
CENTERLINE	CL	FIELD INLET	FI	MONUMENT	MON	SLOPE	S=
CLEAN OUT	C/O	FLARED END SECTION	FES	NOT IN CONTRACT	NIC	STATION	STA
CORRUGATED METAL PIPE	CMP	FOOT, FEET	FT	NOT TO SCALE	NTS	STORM MANHOLE	DMH
CUBIC FEET	CF	FOOTING	FTG	POINT OF CURVATURE	PC	TANGENT	TAN
CUBIC FEET PER SECOND	CFS	FOUNDATION	FND	POINT OF INTERSECTION	PI	TANGENT TO CURVE	TC
CUBIC YARD	CY	GALLONS PER MINUTE	GPM	POLYETHYLENE, PROFESSIONAL ENGINEER	PE	TAPPING SLEEVE AND VALVE	TS&V
DIAMETER	DA	GATE VALVE	GV	PROPERTY LINE	PL	TEMPORARY BENCHMARK	TBM
DISTRIBUTION BOX	D-BOX	HEADWALL	HW	PERC TEST, POINT OF TANGENCY	PT	TEST PIT	TP
DUCTILE IRON	DI	HIGH DENSITY POLYETHYLENE	HDPE	POLYVINYL CHLORIDE	PVC	TOP OF BANK	TB
EDGE OF CONCRETE	EOC	HYDRANT	HYD	POLYETHYLENE, PROFESSIONAL ENGINEER	PE	TOP OF CURB	TOC
EDGE OF GRAVEL	EOG	INTERSECTION	INT	PROPERTY LINE	PL	TOP OF WALL	TOW
EDGE OF PAVEMENT	EOP	INVERT	INV	POINT OF VERTICAL INTERSECTION	PVI	TYPICAL	TYP
ELECTRIC	ELEC	IRON PIN	IP	POND	PND	UNIFORM	UNIF
ELECTRIC MANHOLE	EMH	IRON PIPE SIZE	IPS	QUANTITY	QTY	VERIFICATION	VERIF
ELEVATION	ELEV	LENGTH	L=	QUALITY ASSURANCE	QA	WATER VALVE	WV
				QUALITY CONTROL	QC		
				RADIUS	R=		

STANDARD DETAIL HATCHES

THESE HATCH PATTERNS ARE INTENDED FOR DETAILS THAT ARE 1:1 IN SIZE. MANY OF THE STANDARD EV DETAILS ARE 24 SCALE AND AS SUCH THE HATCH PATTERNS SHOULD BE SCALED ACCORDINGLY.

	PAVEMENT - WEARING COURSE
	PAVEMENT - BINDER/BASE COURSE
	BASE COURSE - FINE CRUSHED GRAVEL
	SUB-BASE COURSE - CRUSHED GRAVEL
	EXISTING/UNDISTURBED GROUND
	BACKFILL - NATIVE MATERIAL
	SAND BEDDING/BLANKET
	CONCRETE
	PLACED LOAM
	CRUSHED STONE BEDDING/UNDERDRAINS
	PEA GRAVEL

GRAPHIC SCHEDULE

	BUILDINGS
	IMPERIOUS SURFACE (ROADS, WALKS, PARKING)
	CONCRETE
	CHRUSED STONE/RIPRAP

CIVIL LINETYPE LEGEND

PROPOSED FEATURES	EXISTING FEATURES
100 MAJOR CONTOUR	100 MAJOR CONTOUR
98 MINOR CONTOUR	98 MINOR CONTOUR
EDGE OF RIVER	EDGE OF RIVER
EDGE OF POND	EDGE OF POND
FLOOD PLAN	FLOOD PLAN
PROPERTY LINE	PROPERTY LINE
RIGHT OF WAY	RIGHT OF WAY
SETBACK	SETBACK
EASEMENT	EASEMENT
LIMIT OF CONSTRUCTION	LIMIT OF CONSTRUCTION
LIMIT OF DISTURBANCE	LIMIT OF DISTURBANCE
SILT FENCE	SILT FENCE
DEMOLITION WORK	DEMOLITION WORK
CENTERLINE	CENTERLINE
EDGE OF PAVEMENT	EDGE OF PAVEMENT
EDGE OF GRAVEL	EDGE OF GRAVEL
EDGE OF CONCRETE	EDGE OF CONCRETE
CURB	CURB
X X FENCE (BARBED WIRE)	X X FENCE (BARBED WIRE)
O O FENCE (CHAIN LINK)	O O FENCE (CHAIN LINK)
□ □ FENCE (WOODEN)	□ □ FENCE (WOODEN)
GUARD RAIL	GUARD RAIL
TREE LINE	TREE LINE
EDGE OF WETLANDS	EDGE OF WETLANDS
EDGE OF WETLANDS - APPROXIMATE	EDGE OF WETLANDS - APPROXIMATE
STONE WALL	STONE WALL
SANITARY SEWER	SANITARY SEWER
SANITARY SEWER APPROX.	SANITARY SEWER APPROX.
SEWER FORCEMAIN	SEWER FORCEMAIN
SEWER SERVICE	SEWER SERVICE
DISPOSAL AREA LATERAL	DISPOSAL AREA LATERAL
STORM LINE	STORM LINE
STORM LINE APPROX.	STORM LINE APPROX.
UNDER DRAIN	UNDER DRAIN
FOUNDATION DRAIN	FOUNDATION DRAIN
ROOF DRAIN	ROOF DRAIN
DITCH/SWALE	DITCH/SWALE
TELECOMM	TELECOMM
TELECOMM APPROX.	TELECOMM APPROX.
UNDERGROUND TELECOMM	UNDERGROUND TELECOMM
OVERHEAD TELECOMM	OVERHEAD TELECOMM
ELECTRIC LINE	ELECTRIC LINE
ELECTRIC APPROX.	ELECTRIC APPROX.
UNDERGROUND ELECTRIC	UNDERGROUND ELECTRIC
OVERHEAD ELECTRIC	OVERHEAD ELECTRIC
ELECTRICAL SITE LIGHTING	ELECTRICAL SITE LIGHTING
WATER LINE	WATER LINE
WATER APPROX.	WATER APPROX.
WATER SERVICE	WATER SERVICE
GAS LINE	GAS LINE
GAS APPROX.	GAS APPROX.
CABLE TV	CABLE TV
CABLE TV APPROX.	CABLE TV APPROX.
UNDERGROUND CABLE TV	UNDERGROUND CABLE TV
OVERHEAD CABLE TV	OVERHEAD CABLE TV
STEAM LINE	STEAM LINE
STEAM LINE APPROX.	STEAM LINE APPROX.
LOW PRESSURE STEAM	LOW PRESSURE STEAM
LOW PRESSURE RETURN	LOW PRESSURE RETURN
HIGH PRESSURE SUPPLY	HIGH PRESSURE SUPPLY
HIGH PRESSURE RETURN	HIGH PRESSURE RETURN
HOT WATER	HOT WATER
HOT WATER SUPPLY	HOT WATER SUPPLY
HOT WATER RETURN	HOT WATER RETURN
CHILLED WATER	CHILLED WATER
CHILLED WATER SUPPLY	CHILLED WATER SUPPLY
CHILLED WATER RETURN	CHILLED WATER RETURN

GENERAL NOTES

- EXACT OBJECT LOCATIONS MAY DIFFER FROM THAT AS SHOWN, AND ADDITIONAL SUB-SURFACE AND SURFACE UTILITIES AND STRUCTURES MAY EXIST. THE CONTRACTOR IS TO PROCEED WITH GREAT CARE IN EXECUTING ANY WORK AND TO CALL DIG SAFE 72 HOURS PRIOR TO ANY DIGGING, DRILLING OR BLASTING.
- THE ENGINEER SHALL BE NOTIFIED IN WRITING OF ANY CONDITIONS THAT VARY FROM THOSE SHOWN ON THE PLANS. THE CONTRACTOR'S WORK SHALL NOT VARY FROM THE PLANS WITHOUT THE EXPRESSED APPROVAL FROM THE ENGINEER.
- THE CONTRACTOR IS INSTRUCTED TO COOPERATE WITH ANY AND ALL OTHER CONTRACTORS PERFORMING WORK ON THIS JOB SITE DURING THE PERFORMANCE OF THIS CONTRACT.
- THE CONTRACTOR SHALL RESTORE LAWNS, DRIVEWAYS, CULVERTS, SIGNS AND OTHER PUBLIC OR PRIVATE PROPERTY DAMAGED OR REMOVED TO EXISTING CONDITIONS OR BETTER AS DETERMINED BY THE ENGINEER. ANY DAMAGED TREES, SHRUBS AND/OR HEDGES SHALL BE REPLACED AT THE CONTRACTOR'S EXPENSE, UNLESS NOTED OTHERWISE.
- THE CONTRACTOR SHALL COMPLY WITH ALL REQUIRED PERMITS.
- THE OWNER SHALL BE RESPONSIBLE FOR OBTAINING, AND INCURRING THE COST OF ALL REQUIRED PERMITS, INSPECTIONS, AND CERTIFICATES.
- THE CONTRACTOR WILL PROTECT EXISTING PROPERTY LINE MONUMENTATION. ANY MONUMENTATION DISTURBED OR DESTROYED, AS JUDGED BY THE ENGINEER OR OWNER SHALL BE REPLACED AT THE CONTRACTOR'S EXPENSE UNDER THE SUPERVISION OF A NEW HAMPSHIRE STATE LICENSED LAND SURVEYOR.
- IT IS THE CONTRACTOR'S RESPONSIBILITY TO EXAMINE ALL PLAN SHEETS AND SPECIFICATIONS, AND COORDINATE WORK WITH ALL CONTRACTS FOR THE SITE.
- IT IS THE CONTRACTOR'S RESPONSIBILITY TO CONDUCT EXPLORATORY TEST PITS AS MAY BE REQUIRED TO DETERMINE UNDERGROUND CONDITIONS.
- ALL TRENCH EXCAVATION AND ANY REQUIRED SHEETING AND SHORING SHALL BE DONE IN ACCORDANCE WITH THE LATEST OSHA REGULATIONS FOR CONSTRUCTION.
- CONTRACTOR SHALL BE RESPONSIBLE FOR DEWATERING AND THE MAINTENANCE OF SURFACE DRAINAGE DURING THE COURSE OF WORK.
- MAINTAIN FLOW FOR ALL EXISTING UTILITIES, UNLESS NOTED OTHERWISE.
- ALL SITE FILL SHALL MEET SELECTED FILL STANDARDS UNLESS NOTED OTHERWISE ON THE DRAWINGS.
- CONTRACTOR TO GRADE ALL AREAS ON THE SITE TO PROVIDE POSITIVE DRAINAGE AWAY FROM BUILDINGS AND IMPERVIOUS SURFACES.
- THE CONTRACTOR SHALL BE RESPONSIBLE FOR PROVIDING ALL FIELD LAYOUT. THE CONTRACTOR SHALL PROVIDE MARKED-UP AS-BUILT PLANS FOR ALL UTILITIES SHOWING CONNECTIONS, BENDS, VALVES, LENGTHS OF LINES AND INVERTS. AS-BUILT PLANS SHALL BE REVIEWED BY THE OWNER AND HIS REPRESENTATIVES BEFORE UTILITIES WILL BE ACCEPTED.
- CONTRACTOR SHALL BE RESPONSIBLE FOR PROPER INSTALLATION, MONITORING, MAINTENANCE AND REMOVAL OF ALL TEMPORARY EROSION CONTROL MEASURES AND TAKING PRECAUTIONARY STEPS TO AVOID ANY SEDIMENT TRANSFER TO NEIGHBORING SITES OR WATERS OF THE STATE.

EROSION CONTROL LEGEND

EROSION PREVENTION AND SEDIMENT CONTROL STRATEGY
THE FOLLOWING TECHNIQUES WILL BE UTILIZED AS PART OF A SEDIMENT AND EROSION CONTROL PROGRAM. THE SEDIMENT AND EROSION CONTROL PROGRAM WILL BE IMPLEMENTED IN STAGES. CERTAIN ITEMS FROM ONE STAGE WILL LIKELY OVERLAP OR TAKE PLACE CONCURRENTLY WITH ITEMS FROM OTHER STAGES.

TEMPORARY INLET PROTECTION - INSTALL AS INDICATED ON PLANS. STONE TO BE REMOVED AND REPLACED WITH CLEAN STONE WHEN SEDIMENT IS $\leq 1/2$ DEPTH OF STONE. REMOVE ALL SEDIMENT IF COLLECTED IN STRUCTURE AS SOON AS POSSIBLE.

STONE CHECK DAM
THIS STRUCTURAL MEASURE IS ALONG DITCHES/ SWALES AND IN OTHER LOCATIONS INDICATED ON THIS PLAN TO SLOW STORMWATER RUNOFF AND TRAP SEDIMENT PARTICLES. THESE WILL REMAIN IN PLACE AND BE MAINTAINED UNTIL THE PROJECT SITE HAS BEEN PERMANENTLY STABILIZED.

PERMANENT EROSION CONTROL NETTING
THIS STRUCTURAL MEASURE IS INSTALLED IN AREAS THAT HAVE SLOPES 3:1 AND GREATER AND IN OTHER LOCATIONS INDICATED ON THIS PLAN TO STABILIZE THE SLOPE AND REDUCE THE EROSION POTENTIAL. THE NETTING IS TYPICALLY IMPREGNATED WITH GRASS SEED AND SOMETIMES STAPLED TO THE EXPOSED SOIL. THESE WILL REMAIN IN PLACE AND BE MAINTAINED UNTIL THE PROJECT SITE HAS BEEN PERMANENTLY STABILIZED.

TEMPORARY STABILIZED CONSTRUCTION ENTRANCE
THIS STRUCTURAL MEASURE IS A STABILIZED PAD OF AGGREGATE UNDERLAIN WITH FILTER FABRIC LOCATED AT ANY POINT WHERE TRAFFIC WILL BE ENTERING OR LEAVING A CONSTRUCTION SITE TO OR FROM A PUBLIC RIGHT-OF-WAY, STREET, ALLEY, SIDEWALK, OR PARKING AREA. THE PURPOSE OF A STABILIZED CONSTRUCTION ENTRANCE IS TO REDUCE OR ELIMINATE THE TRACKING OF SEDIMENT ONTO PUBLIC RIGHTS-OF-WAY OR STREETS. THIS WILL REMAIN IN PLACE AND BE MAINTAINED UNTIL THE PROJECT SITE HAS BEEN PERMANENTLY STABILIZED. ONCE REMOVED, THE IMPACTED AREA SHALL BE SEEDED AND MULCHED.

TEMPORARY SEDIMENT BASIN
THIS STRUCTURAL MEASURE INVOLVES CONSTRUCTING TEMPORARY SEDIMENT BASINS IN THE LOCATION OF PROPOSED STORMWATER PONDS. GENERALLY THE STORMWATER PONDS CAN BE CONSTRUCTED AS SHOWN ON THE PLANS HOWEVER ORIFICE ON THE OUTLET STRUCTURES SHALL BE OMITTED UNTIL THE SITE IS STABILIZED TO IMPOUND RUNOFF AND ALLOW FOR SETTLING OF SUSPENDED FINES. THIS WILL REMAIN IN PLACE AND BE MAINTAINED UNTIL THE PROJECT SITE HAS BEEN PERMANENTLY STABILIZED. ONCE THE SITE IS STABILIZED, SEDIMENT SHALL BE REMOVED FROM THE BASINS AND THE OUTLET ORIFICE SHALL BE DRILLED INTO THE OUTLET STRUCTURE AS NOTED ON THE PLANS.

TEMPORARY STAGING AND WASTE AREAS (APPROXIMATE)
THESE ARE APPROVED LOCATIONS WHERE NON-SOIL, NON-ERODIBLE MATERIALS MAY BE STORED. SOILS SHALL NOT BE STORED IN THESE AREAS.

TEMPORARY SOIL STOCKPILE AREAS (APPROXIMATE)
THESE ARE APPROVED LOCATIONS WHERE TOPSOIL AND OTHER SOIL MATERIALS MAY BE STORED. THESE STOCKPILES WILL BE PROTECTED FROM EROSION BY A NUMBER OF METHODS, INCLUDING INSTALLING SILT FENCING AROUND THE DOWN GRADIENT PERIMETER OF THE STOCKPILE AND SEEDING AND MULCHING THE STOCKPILE WHEN NOT IN USE FOR MORE THAN FIVE DAYS.

CONSTRUCTION (CF) OR CHAIN LINK (G) FENCING
THIS STRUCTURAL MEASURE IS INSTALLED ALONG THE PERIMETER OF THE PROJECT AREA, IN MANY CASES THE LIMIT OF DISTURBANCE WILL COINCIDE WITH THE FENCING OR INDICATE BUFFER AREAS TO BE PROTECTED. THE FENCING IS EFFECTIVE WHEN USED TO SEPARATE THE PROJECT AREA FROM ADJACENT AREAS USED BY THE PUBLIC. THESE WILL REMAIN IN PLACE AND BE MAINTAINED UNTIL THE PROJECT SITE HAS BEEN PERMANENTLY STABILIZED. CONFIRM LOCATION, EXTENTS AND GATES WITH OWNER. FENCE LOCATION AND GATES TO BE RE-ADJUSTED AS NECESSARY BASED ON OWNER REQUIREMENTS AND COORDINATION.

TEMPORARY SILT FENCING
THIS STRUCTURAL MEASURE IS A TEMPORARY BARRIER OF GEOTEXTILE FABRIC USED TO INTERCEPT SEDIMENT LADEN RUNOFF FROM SMALL DRAINAGE AREAS OF DISTURBED SOIL. IT IS INSTALLED ALONG THE PERIMETER OF IMPACTED AREAS AND ALONG THE BASE OF THE FILL SLOPES. ADDITIONALLY, WHEN DESIGNATED ALONG THE LIMITS OF DISTURBANCE, INSTALL CONSTRUCTION FENCE BEHIND THE SILT FENCE. SILT FENCING IS EFFECTIVE IN REDUCING STORMWATER RUNOFF VELOCITIES, ASSIST IN THE DEPOSITION OF TRANSPORTED SEDIMENT LOAD AND PREVENT EROSION OF SOILS ONTO ADJACENT AREAS. THESE WILL REMAIN IN PLACE AND BE MAINTAINED UNTIL THE PROJECT SITE HAS BEEN PERMANENTLY STABILIZED.

LIMITS OF DISTURBANCE
THE CONTRACTOR SHALL CONTAIN ANY EARTH MOVING ACTIVITIES WITHIN THE DESIGNATED LIMITS SHOWN ON THIS PLAN. THE ENGINEER SHALL REVIEW THE SITE TO MAKE ANY ADJUSTMENTS TO ACCOUNT FOR ENVIRONMENTALLY SENSITIVE AREAS, SPECIMEN TREES AND SPECIAL AREAS OF CONCERN.

LIMITS OF CONSTRUCTION
THE CONTRACTOR SHALL CONTAIN ANY EARTH MOVING ACTIVITIES WITHIN THE DESIGNATED LIMITS SHOWN ON THIS PLAN. THE ENGINEER SHALL REVIEW THE SITE TO MAKE ANY ADJUSTMENTS TO ACCOUNT FOR ENVIRONMENTALLY SENSITIVE AREAS, SPECIMEN TREES AND SPECIAL AREAS OF CONCERN.

CIVIL SYMBOL LEGEND

PROPOSED FEATURES	EXISTING FEATURES

SURVEY NOTES

- EXISTING PHYSICAL FEATURES, PROPERTY LINES AND TOPOGRAPHY SHOWN HERE HAVE BEEN TAKEN FROM OTTERMAN SURVEY DATED OCTOBER 11, 2023.
- UTILITIES SHOWN DO NOT PURPORT TO CONSTITUTE OR REPRESENT ALL UTILITIES LOCATED UPON OR ADJACENT TO THE SURVEYED PREMISES.
- NORTH ORIENTATION IS REFERENCED TO APPROXIMATE VERMONT VTSATE PLANE COORDINATE SYSTEM GRID NORTH DERIVED FROM GPS READINGS OBSERVED BY OTHERS.
- ADDITIONAL SURFACE TOPOGRAPHY IS DERIVED FROM VERMONT OPEN GEODATA PORTAL 0.35M 2023 LIDAR AERIAL DATA.
- EXISTING UTILITIES SHOWN ON PLANS WERE TAKEN FROM FIELD OBSERVATIONS OF VISIBLE UTILITIES AND PAINTED MARKINGS. CONTRACTOR SHALL BE RESPONSIBLE FOR FIELD VERIFYING UTILITY LOCATIONS PRIOR TO COMMENCING WORK. NOTIFY ENGINEER OF ANY DISCREPANCY BETWEEN UTILITIES AS SHOWN AND AS FOUND. THE CONTRACTOR SHALL CONTACT DIG SAFE (811 or 888-344-7233) A MINIMUM OF 72 HOURS, BUT NOT INCLUDING SATURDAYS, SUNDAYS AND LEGAL HOLIDAYS, PRIOR TO ANY CONSTRUCTION.

Stamp

Date: 5/20/2025

Description: COORDINATION UPDATE

No. 1

ENGINEERING VENTURES PC
208 Flynn Avenue, Suite 2A, Burlington, VT 05401 • 802-863-6225
85 Mechanic Street, Suite E2-3, Lebanon, NH 03766 • 603-442-3333
414 Union Street, Schenectady, NY 12305 • 518-205-9141
www.engineeringventures.com

TONI PIPPY
TOWN OF STRAFFORD
227 JUSTIN MORRILL MEMORIAL HWY
STRAFFORD, VERMONT
PHONE NUMBER

NOTES AND LEGENDS
STRAFFORD TOWN OFFICE
RENOVATIONS
STRAFFORD, ORANGE COUNTY, VERMONT

Sheet Title:

Project Title:

EV Project #: 24537
Drawn By: LRL
Checked By: PB
Scale: 1" = 5'
Date: 08/12/2025

C002

PLOTTED: 01/20/25 7:53 AM



PROPERTY LINE FROM SURVEY

ASSUMED ROW FROM SURVEY

EXISTING STORM STRUCTURE

EXISTING FFE
923.35'

EXISTING STORM STRUCTURE

DEMO EXISTING PAVEMENT



GRAPHIC SCALE

1 inch = 5 ft.
for sheet size 24" x 36"

No.	Description	Date	Stamp
1	COORDINATION UPDATE	02/20/25	

ENGINEERING VENTURES PC
 208 Flynn Avenue, Suite 2A, Burlington, VT 05401 • 802-863-6225
 85 Mechanic Street, Suite E2-3, Lebanon, NH 03766 • 603-442-9333
 414 Union Street, Schenectady, NY 12305 • 518-205-9141
 www.engineeringventures.com

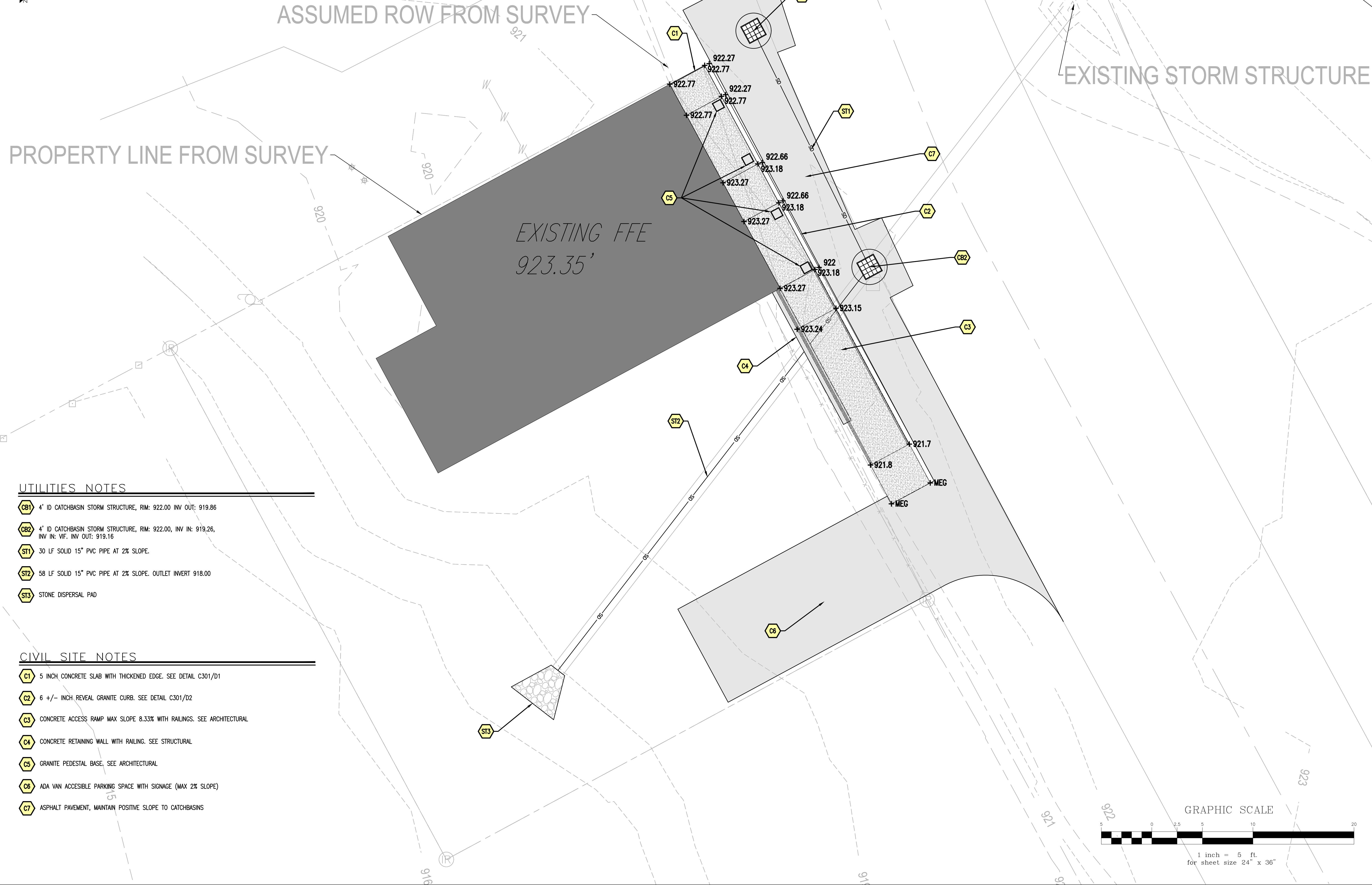
TONI PIPPY
 TOWN OF STRAFFORD
 227 JUSTIN MORRILL MEMORIAL HWY
 STRAFFORD, VERMONT
 PHONE NUMBER

Sheet Title:
EXISTING CONDITIONS AND DEMO
 Project Title:
STRAFFORD TOWN OFFICE RENOVATIONS
 STRAFFORD, ORANGE COUNTY, VERMONT

EV Project #	24537
Drawn By:	LRL
Checked By:	PB
Scale:	1" = 5'
Date:	08/12/2025

C101

S:\PROJECTS\2024\27 SOUTH STRAFFORD TOWN HALL RENOVATIONS - CIVIL\DWG\SHEET FILES\24537.CIVIL_EXISTING CONDITIONS.DWG

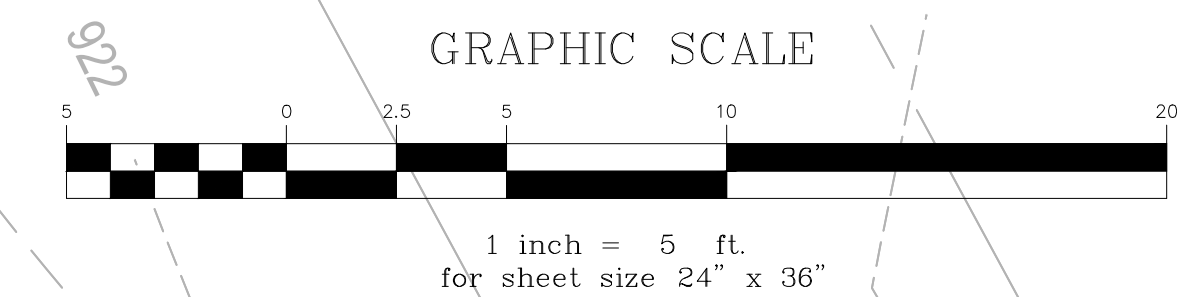


UTILITIES NOTES

- CB1 4' ID CATCHBASIN STORM STRUCTURE, RIM: 922.00 INV OUT: 919.86
- CB2 4' ID CATCHBASIN STORM STRUCTURE, RIM: 922.00, INV IN: 919.26, INV IN: VIF, INV OUT: 919.16
- ST1 30 LF SOLID 15" PVC PIPE AT 2% SLOPE.
- ST2 58 LF SOLID 15" PVC PIPE AT 2% SLOPE. OUTLET INVERT 918.00
- ST3 STONE DISPERSAL PAD

CIVIL SITE NOTES

- C1 5 INCH CONCRETE SLAB WITH THICKENED EDGE. SEE DETAIL C301/D1
- C2 6 +/- INCH REVEAL GRANITE CURB. SEE DETAIL C301/D2
- C3 CONCRETE ACCESS RAMP MAX SLOPE 8.33% WITH RAILINGS. SEE ARCHITECTURAL
- C4 CONCRETE RETAINING WALL WITH RAILING. SEE STRUCTURAL
- C5 GRANITE PEDESTAL BASE. SEE ARCHITECTURAL
- C6 ADA VAN ACCESSIBLE PARKING SPACE WITH SIGNAGE (MAX 2% SLOPE)
- C7 ASPHALT PAVEMENT, MAINTAIN POSITIVE SLOPE TO CATCHBASINS



No.	Description	Date	Stamp
1	COORDINATION UPDATE	02/20/2025	

ENGINEERING VENTURES PC

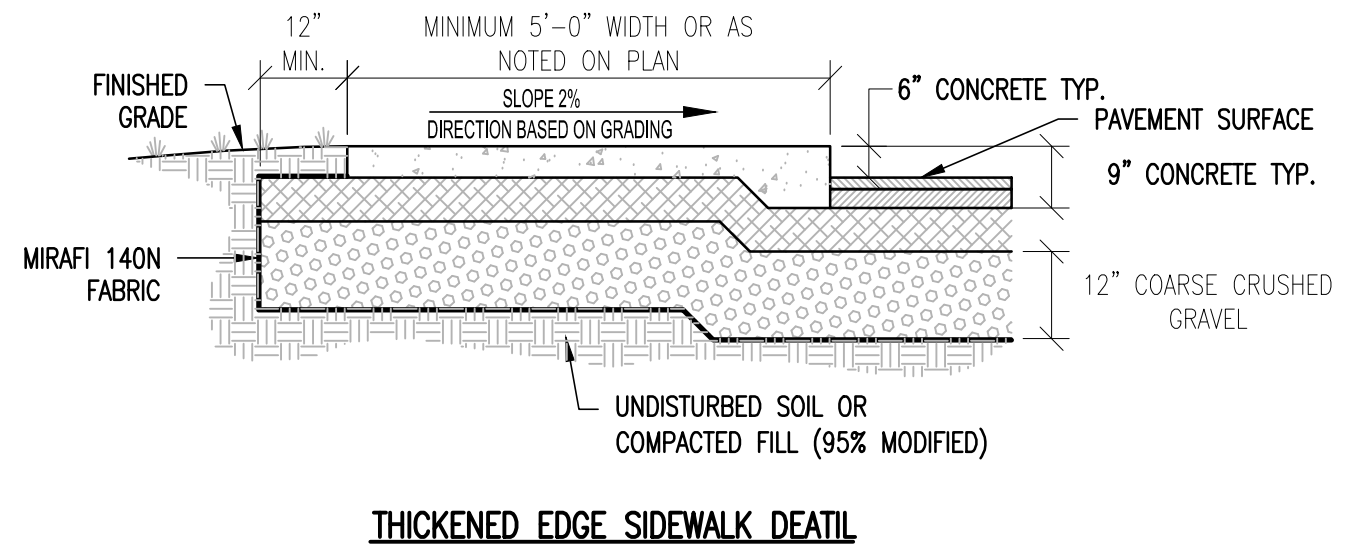
208 Flynn Avenue, Suite 2A, Burlington, VT 05401 • 802-863-6225
 85 Mechanic Street, Suite E2-3, Lebanon, NH 03766 • 603-442-3333
 414 Union Street, Schenectady, NY 12305 • 518-205-9141
 www.engineeringventures.com

TONI PIPPY
 TOWN OF STRAFFORD
 227 JUSTIN MORRILL MEMORIAL HWY
 STRAFFORD, VERMONT
 PHONE NUMBER

PROPOSED CONDITIONS
STRAFFORD TOWN OFFICE RENOVATIONS
 STRAFFORD, ORANGE COUNTY, VERMONT

EV Project # 24537
 Drawn By: LRL
 Checked By: PB
 Scale: 1" = 5'
 Date: 08/12/2025

C201

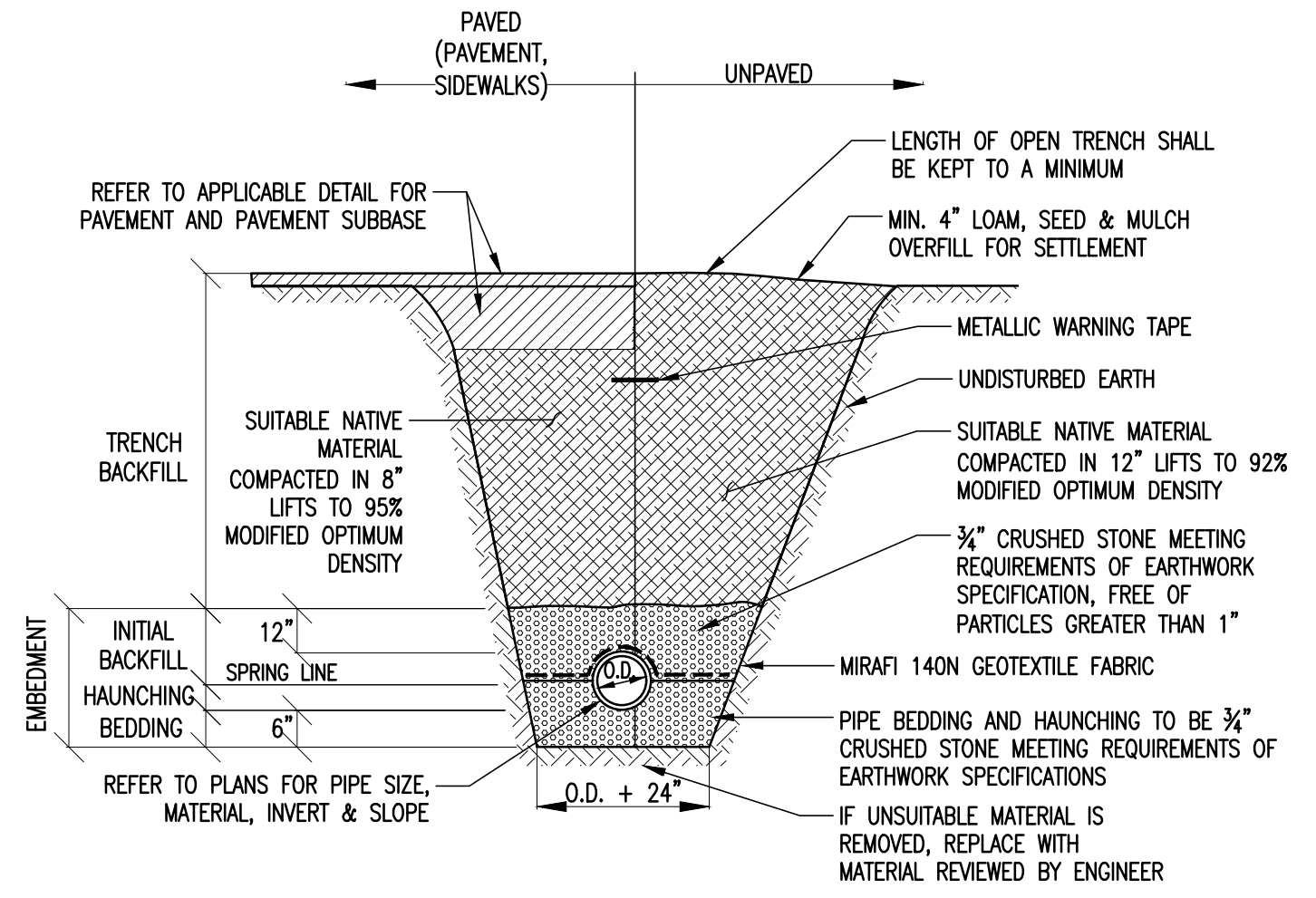


THICKENED EDGE SIDEWALK DETAIL

- NOTES:
- PLACE A TOOLED JOINT 1/8" WIDE AND AT LEAST 1/3 OF THE DEPTH, TYPICALLY AT INTERVALS MATCHING THE SIDEWALK WIDTH, OR AS NOTED ON PLANS (NOT TO EXCEED 10'-0").
 - PLACE EXPANSION JOINT AS INDICATED ON PLANS, NOT TO EXCEED 20'-0" MAX.
 - BROOM FINISH WITH SMOOTH TROWELED EDGES. TREAT WITH SILANE-SILOXANE OR EQUAL.
 - CAST-IN-PLACE CONCRETE TO BE 4000 PSI CONCRETE, 5%-% AIR ENTRAINMENT WITH 6x6-W4-DxW4-D REINFORCING CENTERED IN SIDEWALK.
 - WHERE SIDEWALK IS ADJACENT TO ENTRY/EXIT DOOR PADS WITH FROST WALL FOUNDATIONS, SIDEWALK SHALL BE DOWELED TO PAD WITH 24" LONG #4 DOWELS (CENTERED) AT 1'-6" OC (PORTION OF DOWEL IN SIDEWALK TO BE GREASED).
 - WHERE SIDEWALK IS ADJACENT TO CURB, BOLLARD OR OTHER HARD FEATURE, INSTALL 1/2" EXPANSION MATERIAL (FULL DEPTH OF SIDEWALK), BETWEEN FEATURE AND SIDEWALK.
 - COORDINATE WITH STRUCTURAL DETAILS.

CONCRETE SIDEWALK DETAIL

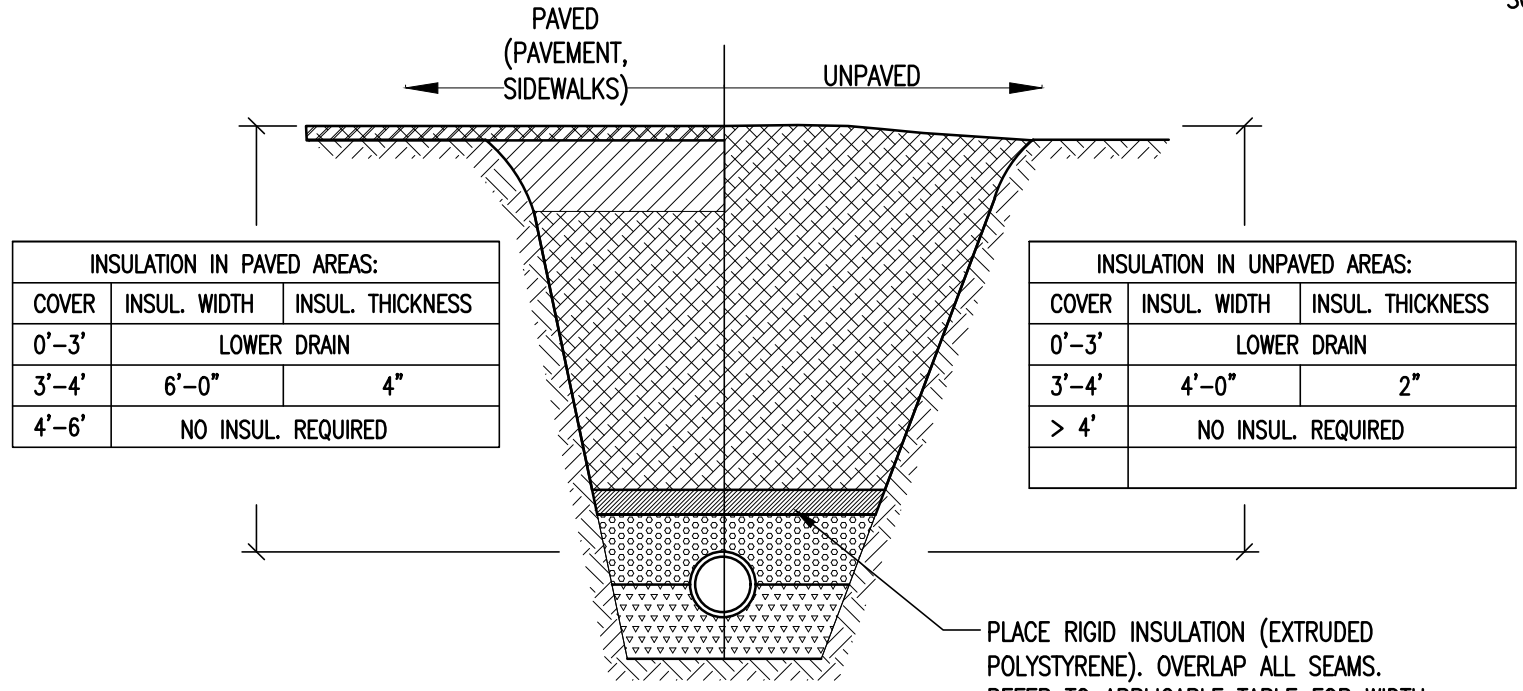
SCALE: NONE



TYPICAL STORM DRAIN TRENCH

SCALE: NONE

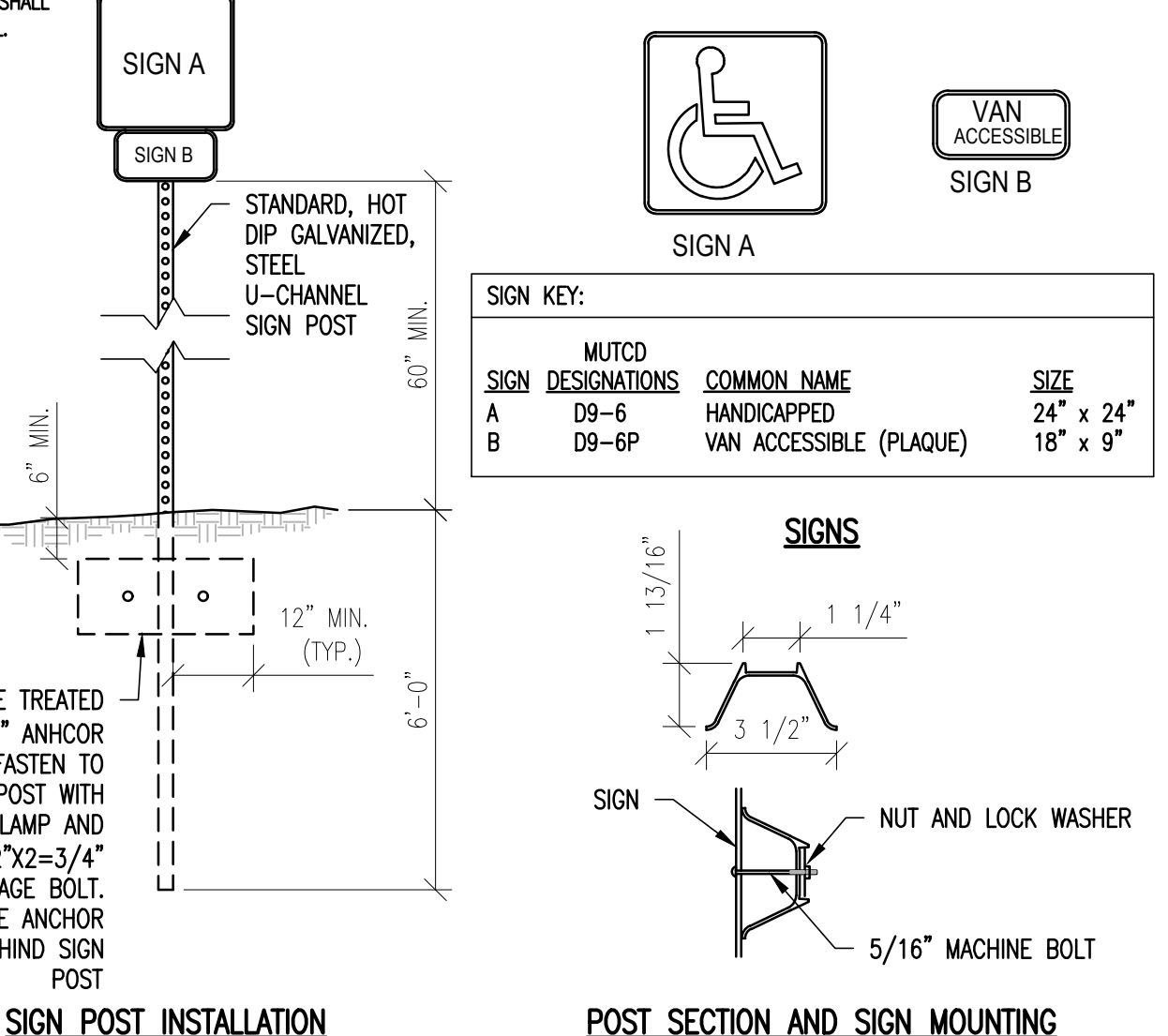
- STORM TRENCH NOTES:
- UNLESS OTHERWISE NOTED, ASSUME CLASS "C" SOILS. PERFORM ALL EXCAVATIONS TO OSHA REQUIREMENTS.
 - BEDDING TO PROVIDE A FIRM, STABLE, CONTINUOUS AND UNIFORM SUPPORT FOR THE FULL LENGTH OF PIPE.
 - WHEN APPLICABLE INSTALL PIPE WITH BELL ENDS DOWN SLOPE. PREVENT SEDIMENT FROM ENTERING NEW STORM DRAIN SYSTEM DURING CONSTRUCTION.
 - NO MECHANICAL TAMPERS SHALL BE USED DIRECTLY OVER PIPE TO INSURE PIPE IS NOT DAMAGED. REFER TO INSULATION DETAIL FOR AREAS WHERE PROPER COVER CAN NOT BE ACHIEVED.
 - BACKFILL SHALL BE OF A SUITABLE NATIVE MATERIAL REMOVED FROM EXCAVATION EXCEPT WHERE OTHER MATERIAL IS SPECIFIED, DEBRIS, FROZEN MATERIAL, LARGE CLODS OR STONES, ORGANIC MATTER OR OTHER UNSUITABLE MATERIAL SHALL NOT BE USED FOR BACKFILL.



INSULATION OVER SHALLOW DRAIN DETAIL

SCALE: NONE

- INSULATION IN PAVED AREAS:
- | COVER | INSUL. WIDTH | INSUL. THICKNESS |
|-------|--------------------|------------------|
| 0'-3" | LOWER DRAIN | |
| 3'-4" | 6'-0" | 4" |
| 4'-6" | NO INSUL. REQUIRED | |
- INSULATION IN UNPAVED AREAS:
- | COVER | INSUL. WIDTH | INSUL. THICKNESS |
|-------|--------------------|------------------|
| 0'-3" | LOWER DRAIN | |
| 3'-4" | 4'-0" | 2" |
| > 4' | NO INSUL. REQUIRED | |
- STORM DRAIN INSULATION NOTES:
- REFER TO APPLICABLE TRENCH DETAIL FOR SPECIFIC BACKFILL INFORMATION.
 - RIGID EXTRUDED POLYSTYRENE INSULATION SHALL CONFORM WITH ASTM C578 - STANDARD SPECIFICATION FOR RIGID CELLULAR POLYSTYRENE THERMAL INSULATION AND SHALL BE DOW STYROFOAM HIGH LOAD 40 OR EQUIVALENT.

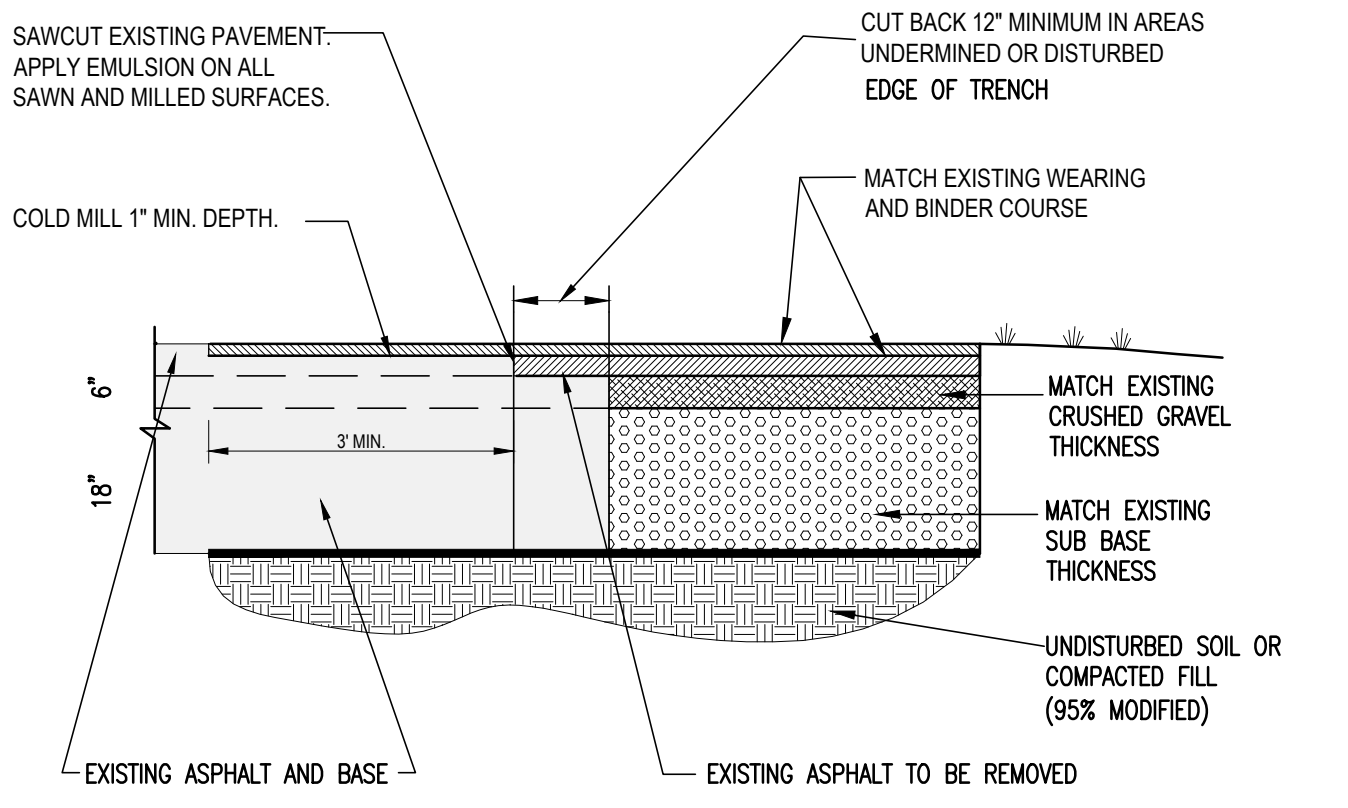


ADA SIGN AND POST DETAILS

SCALE: NONE

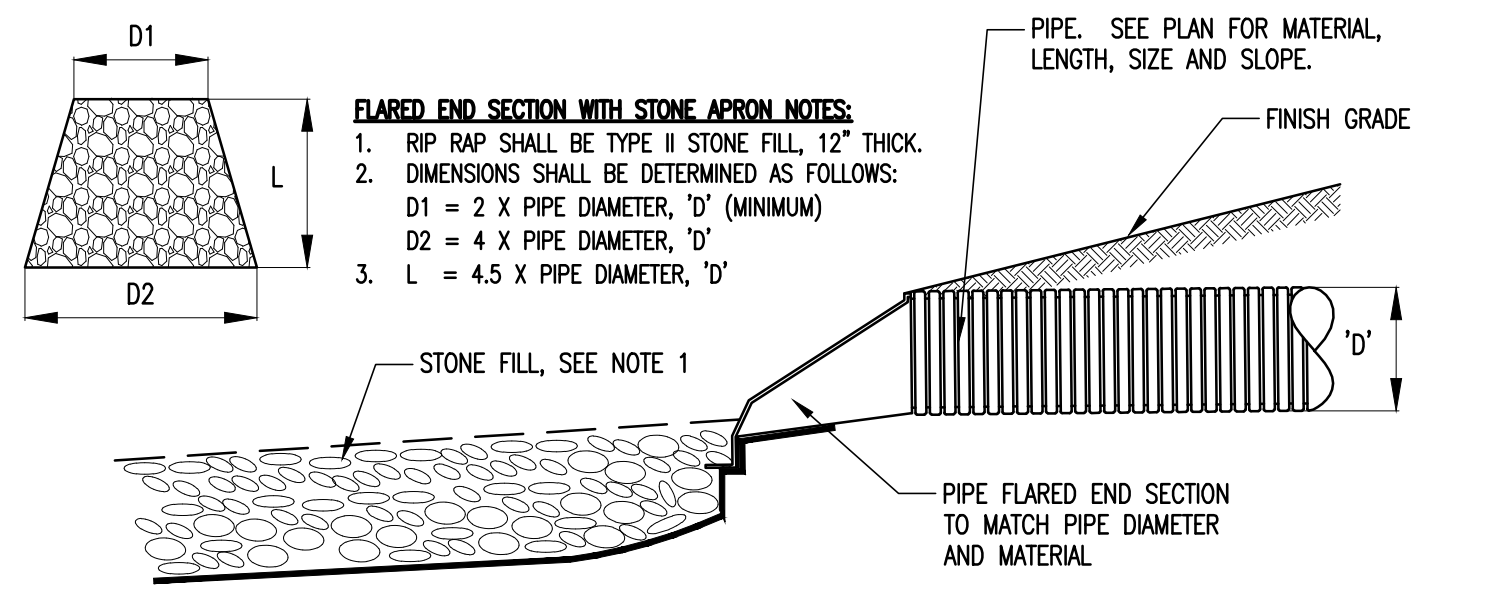
SIGN KEY:

SIGN DESIGNATIONS	COMMON NAME	SIZE
A D9-6	HANDICAPPED	24" x 24"
B D9-6P	VAN ACCESSIBLE (PLAQUE)	18" x 9"



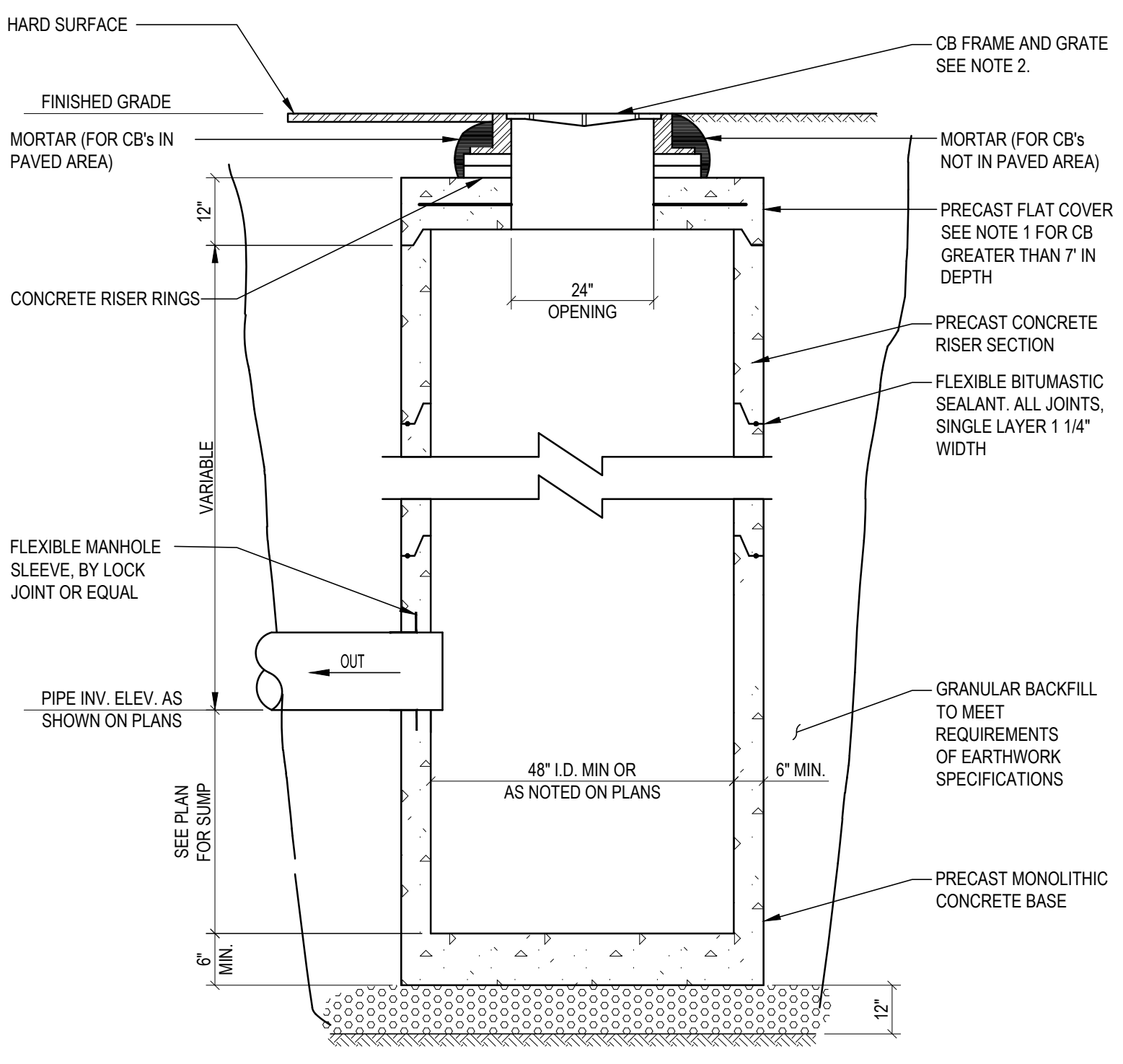
ASPHALT PAVEMENT TRENCH PATCH DETAIL

SCALE: NONE



STONE DISPERSAL PAD DETAIL

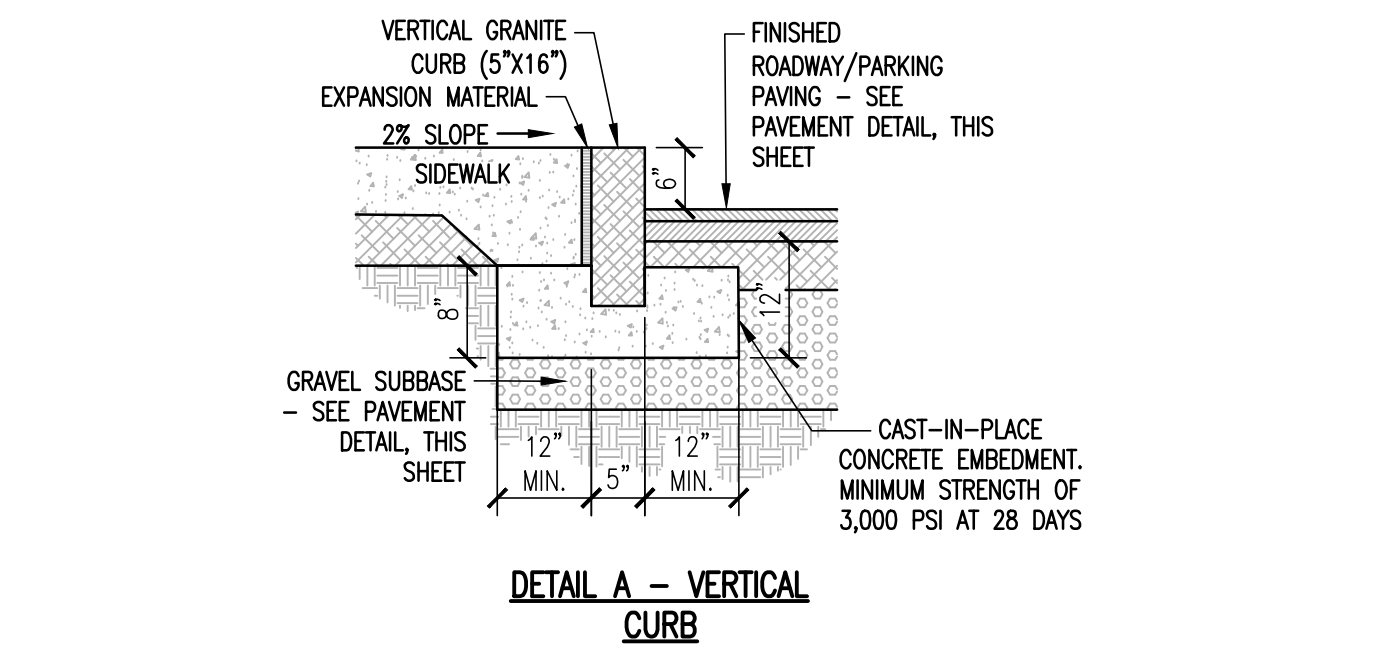
SCALE: NONE



STORM CATCH BASIN DETAIL

SCALE: NONE

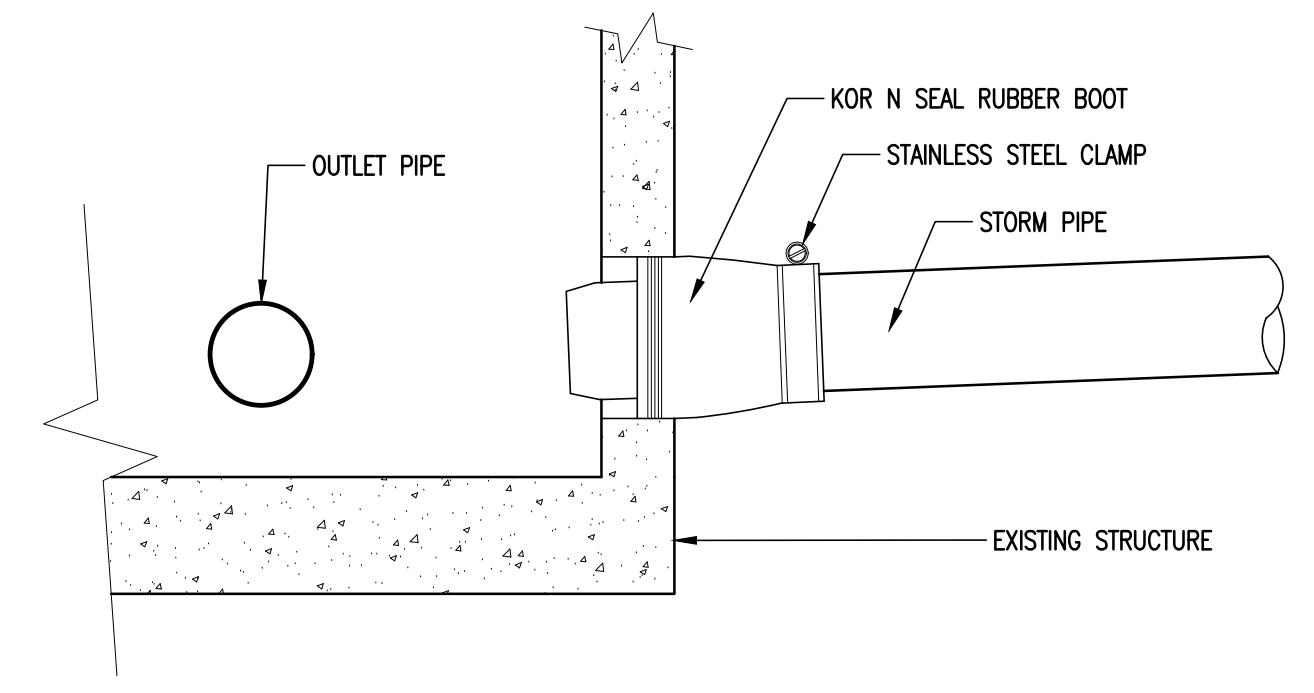
- CATCH BASIN NOTES:
- IF DEPTH OF CATCH BASIN IS 7 FEET OR LESS FROM RIM TO CENTERLINE INVERT THEN A FLAT TOP WILL BE INSTALLED. IF DEPTH OF CATCH BASIN FROM RIM TO CENTERLINE INVERT IS MORE THAN 7 FEET THEN A CONICAL TOP WILL BE INSTALLED.
 - PROVIDE A LEBARON 24"x24" TYPE E OR APPROVED EQUIVALENT, 3 FLANGE GRATE AND FRAME NEXT TO CURBS AND 4 FLANGE GRATE AND FRAME AT ALL OTHER LOCATIONS.
 - CATCH BASIN AND GRATE SHALL BE DESIGNED FOR H20 LOADING.
 - CATCH BASIN SHALL BE PRECAST CONCRETE SUPPLIED BY AN APPROVED MANUFACTURER.



GRANITE CURB DETAIL

SCALE: NONE

- VERTICAL GRANITE CURB NOTES:
- GRANITE CURBS SHALL BE INSTALLED IN ACCORDANCE WITH PROJECT AND STATE SPECIFICATIONS.
 - WHERE CURB IS ADJACENT TO ENTRY/EXIT DOOR PADS WITH FROST WALL FOUNDATIONS, CURB SHALL BE DOWELED TO PAD WITH 24" LONG #4 DOWELS (CENTERED) AT 1'-6" OC (PORTION OF DOWEL IN CURB TO BE GREASED).
 - WHERE CURB IS ADJACENT TO SIDEWALK, BOLLARD OR OTHER HARD FEATURE, BACKSIDE OF CURB SHALL BE SAW CUT. 1/4" EXPANSION MATERIAL (FULL DEPTH OF CURB), SHALL BE INSTALLED BETWEEN FEATURE AND CURB.
 - COORDINATE WITH STRUCTURAL DETAILS.



STORM STRUCTURE CONNECTION DETAIL

SCALE: NONE

- KOR N SEAL NOTES:
- CORE HOLE SHALL BE SMOOTH, SYMMETRICAL, AND APPROPRIATELY SIZED FOR STORM PIPE INSTALLATION.
 - NEW INLET INVERTS SHALL BE A MINIMUM OF 0.1' ABOVE EXISTING OUTLET INVERT.

EARTHWORK NOTES

- PRIOR TO THE START OF WORK, A PRE-CONSTRUCTION MEETING WILL BE HELD WITH THE CONTRACTOR, OWNER, PROJECT ENGINEER AND TOWN DPW TO REVIEW PROCEDURES AND IDENTIFY RESPONSIBILITIES. 4 WEEKS NOTICE SHALL BE GIVEN TO THE TOWN PRIOR TO START OF CONSTRUCTION. UNLESS STATED OTHERWISE STATED, ALL MATERIALS AND METHODS SHALL BE IN ACCORDANCE WITH THE MOST RECENT VERSION OF THE VTRANS SPECIFICATIONS.
- CLEARING AND GRUBBING- SITE TO BE RESTORED TO PRE-CONSTRUCTION CONDITIONS, INCLUDING DRIVEWAYS, STONE WALLS, AND GRASS AREAS. THE DRIVEWAY SUB-GRADE MATERIAL SHALL EXTEND ONE FOOT BEYOND THE EDGE OF PAVING.
- COMPACTION OF ALL MATERIALS SHALL BE PERFORMED USING VIBRATORY ROLLERS AND WATER IN LIFTS OF NO GREATER THAN TWELVE INCHES. COMPACTION SHALL BE PERFORMED UNTIL THE REQUIRED DENSITY IS ACHIEVED. DENSITY SHALL BE DETERMINED BY ASTM D2922 AND SHALL NOT BE LESS THAN THE REQUIRED AMOUNT AS DETERMINED IN ACCORDANCE WITH ASTM D1557.
- COMPACTION TESTING SHALL BE PERFORMED FOR EVERY LAYER OF MATERIAL PLACED AND FOR EVERY 2500 SQUARE FEET OF AREA.
- PAVEMENT SHALL MEET THE LATEST EDITION OF THE 'STANDARD SPECIFICATIONS FOR CONSTRUCTION' AS PUBLISHED BY VTRANS.
- PAVEMENT SHALL NOT BE INSTALLED WHEN THE OUTSIDE AIR TEMPERATURE IS BELOW 40 DEGREES FAHRENHEIT, NOR WHEN THE ROAD BASE TEMPERATURE IS BELOW 40 DEGREES FAHRENHEIT. PAVEMENT SHALL NOT FALL BELOW 185 DEGREES FAHRENHEIT PRIOR TO THE COMPLETION OF ROLLING. PAVEMENT SHALL NOT BE INSTALLED WHEN THE SUBGRADE IS FROZEN OR THE GRADES ARE INCORRECT.
- ALL REMAINING DISTURBED AREAS SHALL BE FERTILIZED AND SEEDED IN ACCORDANCE WITH APPLICABLE STATE SPECIFICATIONS FOR EROSION CONTROL.
- THE SEEDING OF 10% OR GREATER SLOPES SHALL REQUIRE THE USE OF EROSION CONTROL MATTING.
- ALL EARTHWORK MATERIALS SHALL BE OBTAINED FROM APPROVED SOURCES. THEY SHALL CONSIST OF SATISFACTORILY GRADED, FREE DRAINING MATERIAL, REASONABLY FREE FROM LOAM, SILT, CLAY AND ORGANIC MATERIAL. EARTHWORK MATERIALS SHALL MEET THE REQUIREMENTS OF THE FOLLOWING TABLES:

LETTER	MATERIAL	SIEVE DESIGNATION	PERCENT BY WEIGHT PASSING SQUARE MESH SIEVES
A.	SAND BLANKET/BEDDING:	2 INCHES	100
		1-1/2 INCHES	90 - 100
		1/2 INCH	70 - 100
		NO. 4	60 - 100
B.	3/4" CRUSHED STONE:	NO. 100	0 - 20
		NO. 200	0 - 8
		1 INCH	100
		3/4 INCH	90 - 100
C.	1 1/2" CRUSHED STONE:	NO. 4	20 - 55
		NO. 8	0 - 10
		1 1/4 INCH	100
		1 INCH	90 - 100
D.	COARSE CRUSHED GRAVEL:	NO. 4	20 - 55
		NO. 10	0 - 15
		3/8 INCH	0 - 5
		4 INCHES	95 - 100
E.	FINE CRUSHED GRAVEL:	NO. 4	25 - 50
		NO. 100	0 - 12
		NO. 200	0 - 6
		2 INCHES	100
F.	GRANULAR BACKFILL:	1-8 INCHES	90 - 100
		NO. 4	30 - 60
		NO. 10	0 - 12
		NO. 200	0 - 6
G.	TYPE I STONE FOR STONE FILL:	NO. 4	45 - 75
		NO. 10	0 - 12
		NO. 200	0 - 6
		2 1/2 INCHES	90 - 100
H.	TYPE II STONE FOR STONE FILL:	NO. 4	45 - 75
		NO. 10	0 - 12
		NO. 200	0 - 6
		3 INCHES	100
I.	TOPSOIL SHALL MEET THE FOLLOWING REQUIREMENTS UNLESS OTHERWISE SPECIFICALLY STATED IN THE CONTRACT DOCUMENTS:	SIEVE DESIGNATION	PERCENT BY WEIGHT PASSING SQUARE MESH SIEVES
		2 INCHES	100
		1 INCH	85 - 100
J.	DRAINAGE AGGREGATE:	NO. 4	65 - 100
		NO. 10	20 - 80
		NO. 200	0 - 5
K.	AGGREGATE FOR EROSION PREVENTION AND SEDIMENT CONTROL:	4 INCH	80 - 100
		3 INCH	40 - 60
		2 INCH	0 - 20
		NO. 200	0 - 5
L.	DENSE GRADED CRUSHED STONE FOR SUBBASE:	3 1/2 INCH	100
		3 INCH	90 - 100
		2 INCH	75 - 100
		1 INCH	50 - 80
		1/2" INCH	30 - 80
		NO. 4	15 - 40
M.	2" CRUSHED STONE:	NO. 200	0 - 6
		3 INCH	100
		2 INCH	75 - 100
		1 1/4" INCH	0 - 5

ENGINEERING VENTURES PC
 208 Flynn Avenue, Suite 2A, Burlington, VT 05401 • 802-863-6225
 85 Mechanic Street, Suite E2-3, Lebanon, NH 03766 • 603-442-3333
 414 Union Street, Schenectady, NY 12305 • 518-205-9141
 www.engineeringventures.com

TONI PIPPY
 TOWN OF STRAFFORD
 227 JUSTIN MORRILL MEMORIAL HWY
 STRAFFORD, VERMONT
 PHONE NUMBER

Site Details
 STRAFFORD TOWN OFFICE
 RENOVATIONS
 STRAFFORD, ORANGE COUNTY, VERMONT

EV Project # 24537
 Drawn By: LRL
 Checked By: PB
 Scale: 1" = 5'
 Date: 08/12/2025

C301