

Elizabeth Mine Solar PV Project

Strafford
June 17, 2015

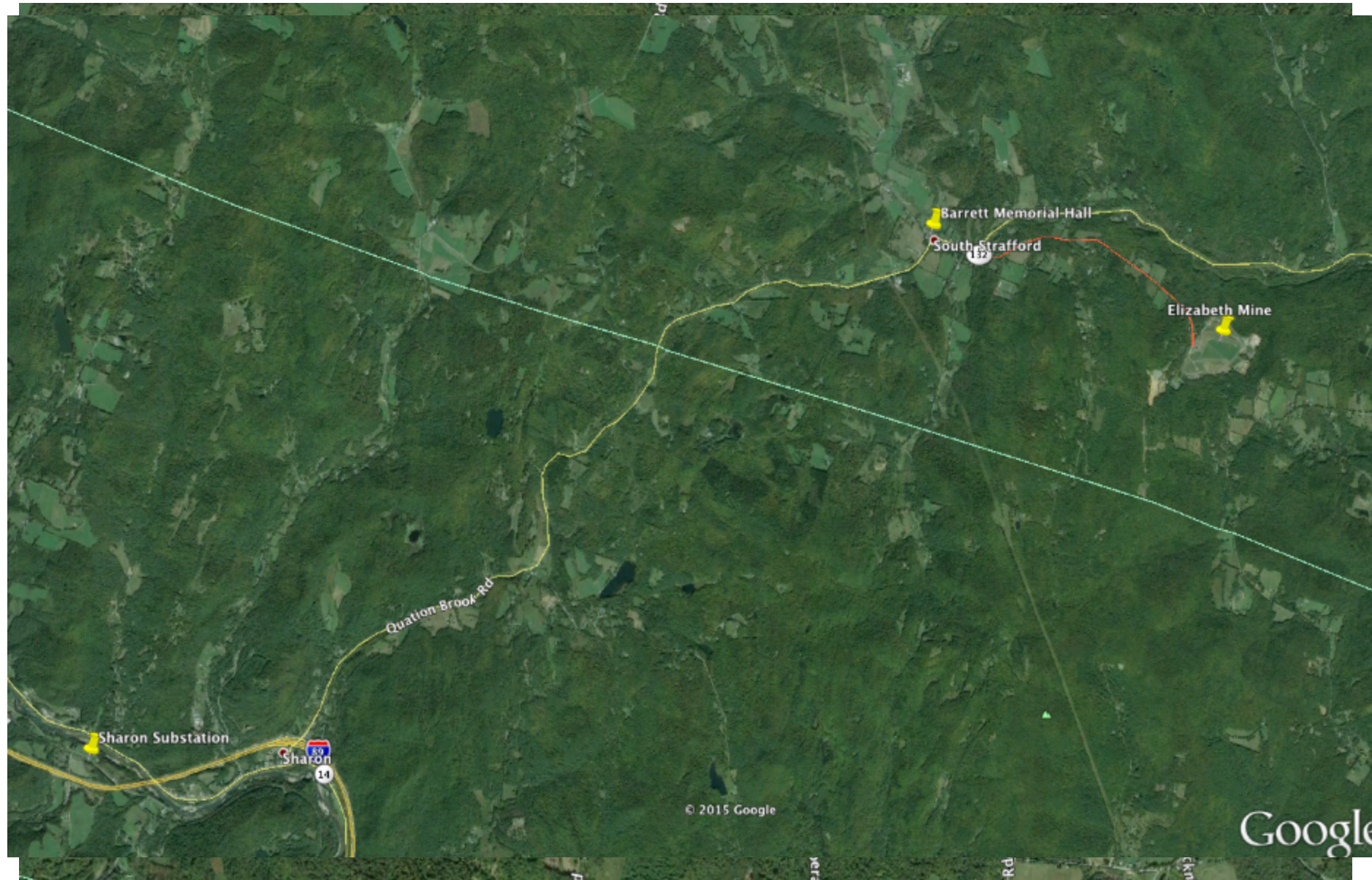


BRIGHTFIELDS
DEVELOPMENT LLC



Elizabeth Mine Locus Maps

169 Mine Road, South Strafford, VT
05070







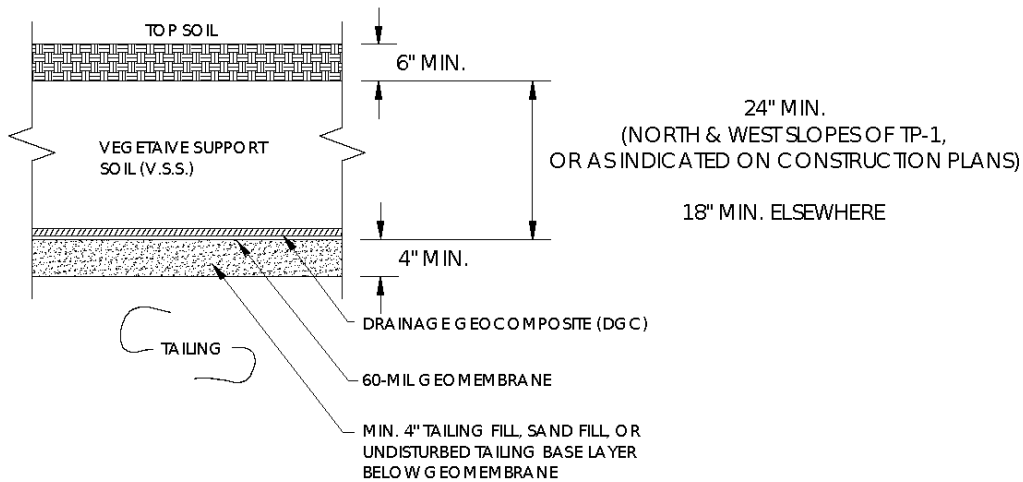
Past

Picture Source: "Copperas to Cleanup" (2014) Milestone Heritage Consulting

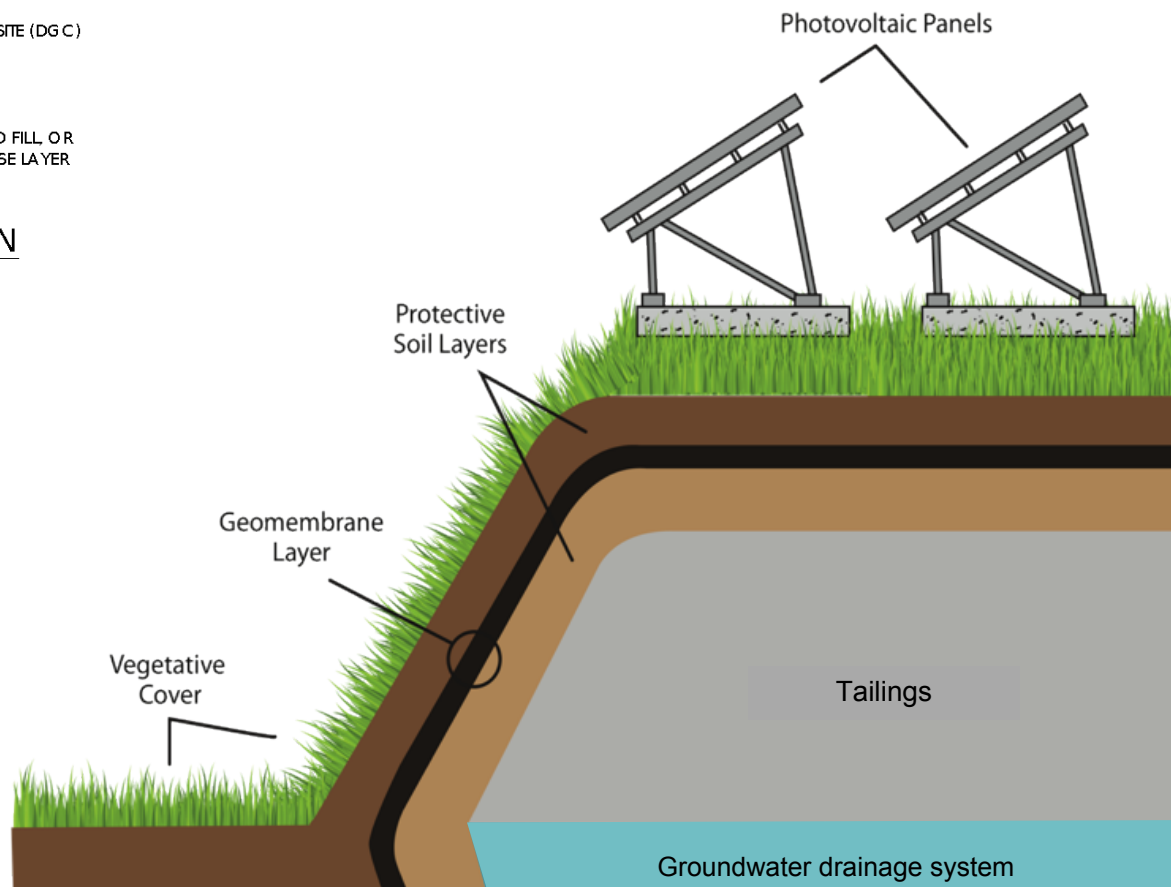


Present

Picture Source: "Copperas to Cleanup" (2014) Milestone Heritage Consulting



1 **LANDFILL CAP CROSS SECTION**
(SECTION VIEW)





Solar Panel & Mounting Example



About the Project



- 4.99 MWAC / 7 MWDC array
- **\$4 million** in local construction jobs, professional fees and rentals
- **8,850,000 kWh** of clean electricity every year
- Power over 1,200 homes annually
- Offset emissions from 14,192 barrels of oil/year
- Offset 6,272 tons of carbon dioxide/year
- Commitment to maintain site integrity
- Aligns with EPA's Re-Powering America initiative

248 Process: Public Service Board

State agencies:

- Public Service Department
- Agency of Natural Resources

and expert testimony in the following areas:

- Electrical Engineering
- Water/Wildlife - Rare, Threatened and Endangered
- Stormwater Management
- Aesthetics
- Historic (above ground and archeological)
- Brownfields / Soils
- Sound / Transportation

248 Process: Expert Testimony

Requires energy developers to obtain a Certificate of Public Good (CPG) from the Public Service Board

- Orderly development
- Demand for service
- System stability & reliability
- Economic benefit
- No undue adverse effect on aesthetics, historic sites, air & water purity, the natural environment, or public health & safety





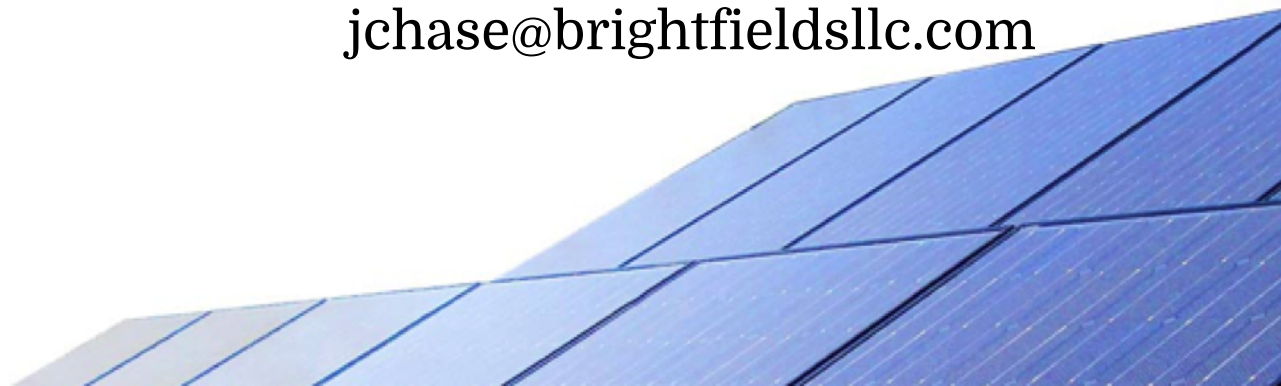
Dori Wolfe
Principal
802.765.4632
Dori.wolfe@gmail.com

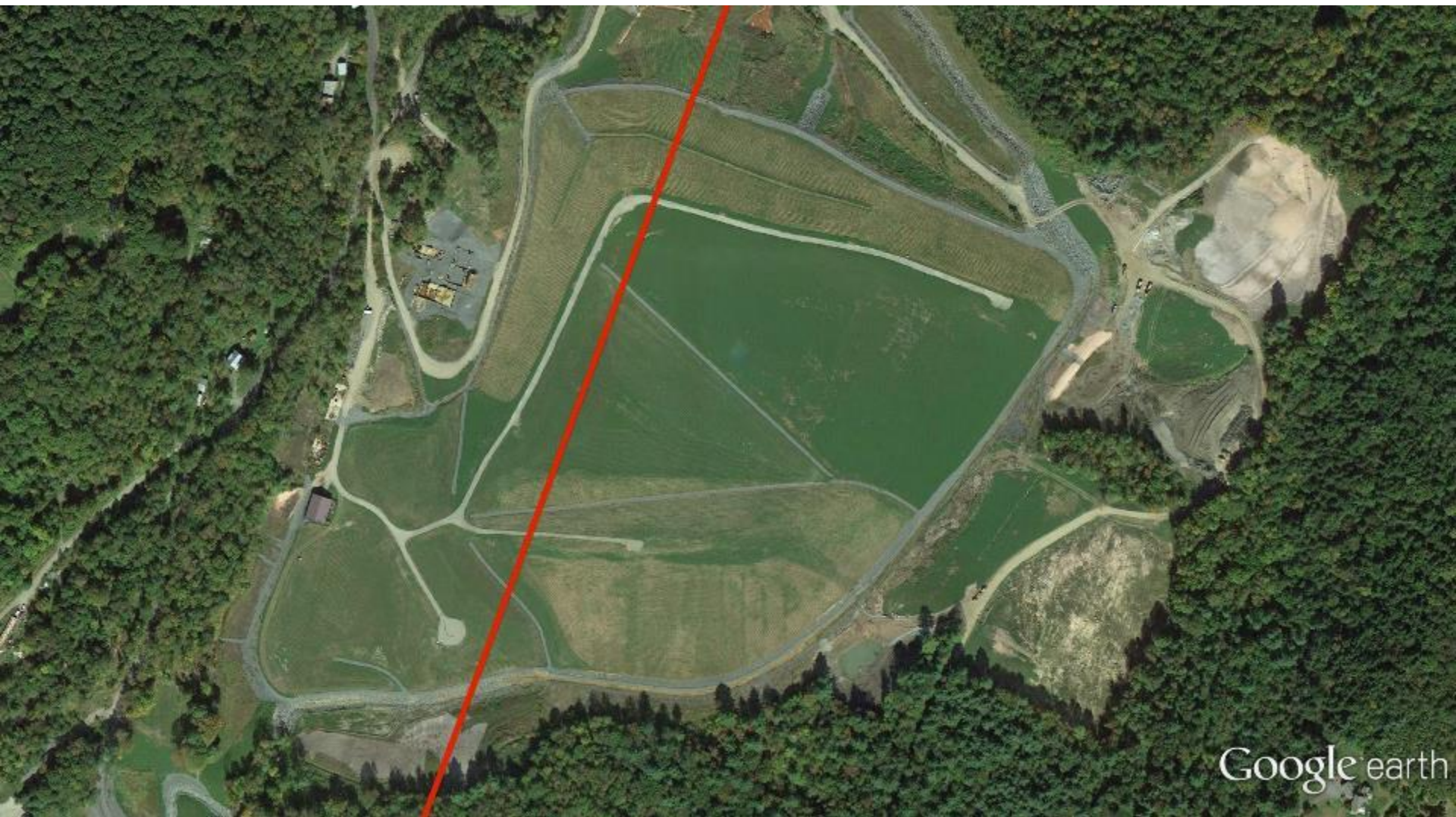


BRIGHTFIELDS
DEVELOPMENT LLC

Ron Kelly
Principal
781.772.2869
rkelly@brightfieldsllc.com

Julia Chase
Associate
781.772.2877
jchase@brightfieldsllc.com





Google earth